

## LASER MARKING SYSTEMS

### VIDEOJET 3120 Laser Marking System

- Market leading speed and reliability
- Built to handle tough environments with low maintenance
- Ability to mark complex codes



Identify with Videojet, world leaders in coding and marking solutions.  
For more information please call +44 (0)870 240 5542,  
or visit our website – [www.videojet.co.uk](http://www.videojet.co.uk)

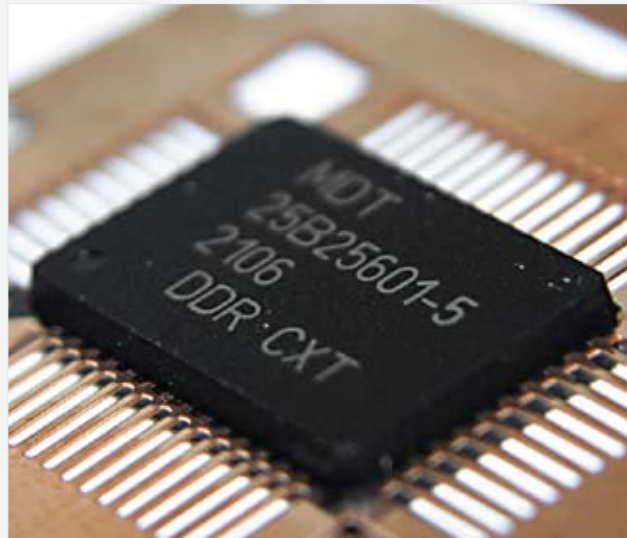
### Speed without loss of quality

With a marking speed of up to 1,200 characters per second and a line speed up to 10 meters per second (depending on the application), the Videojet 3120 is the fastest 10 WATT laser in its class. It is capable of outstanding high quality, multi-line codes, even on high volume production lines.



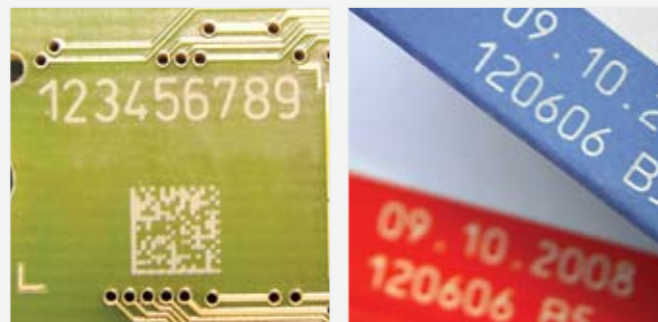
### High level of versatility

The 3120 laser marks complex, multi-line alphanumeric messages, foreign language fonts, graphics, symbols and machine-readable codes. Information such as expiration and manufacture dates, ticket numbers, line codes or content and weight specifications are also quickly and easily marked. Additionally, the compact design and flexible standard components ensure fast and simple integration. To fit into tight spaces, this laser's head can be detached and positioned for even the most intricate marking jobs, and is capable of 0-degree (straight out) or 90-degree laser output.



### Printing on a wide variety of materials

Our 3120 laser will mark on a wide range of materials, including special pharmaceutical boxes, paper, cardboard and carton packages, PET containers, electronic/semiconductor devices and automotive parts, and extruded products such as sealings, profiles and tubes.



### Easy integration

A compact design and flexible standard components ensure fast and simple integration. For installation in conditions where space is tight, the laser head of the Videojet 3120 can be positioned using beam deflectors. This means that even extremely complicated marking tasks can be carried out. Laser beams can be emitted at an angle of 0 degrees (i.e. straight) or even 90 degrees. There is also a wide selection of lenses and flexible user interfaces available.



